

The Heywood Collection

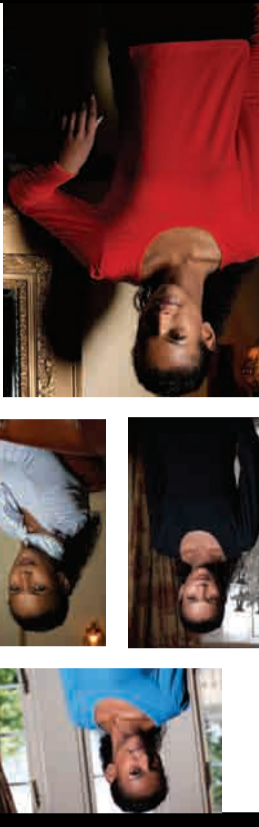


Stunning collection
 Contemporary styles
 High specification
 Technical fabrics
 Comfortable and easy care
 Mix and Match co-ordinating garments
 Easy to create a 'bespoke' look
 Co-ordinating accessories
 First Class service



The Heywood Collection





Comfort Top a stylish viscose and LYCRA® comfort fit top with scoop neckline available in long and short sleeve. The excellent drape flatters the figure and the gathers at the top of the sleeve add extra detail. It has a silky appearance and feel, and leaves you feeling cool and comfortable due to the breathability of the fabric. Ideal for a more relaxed but professional look.

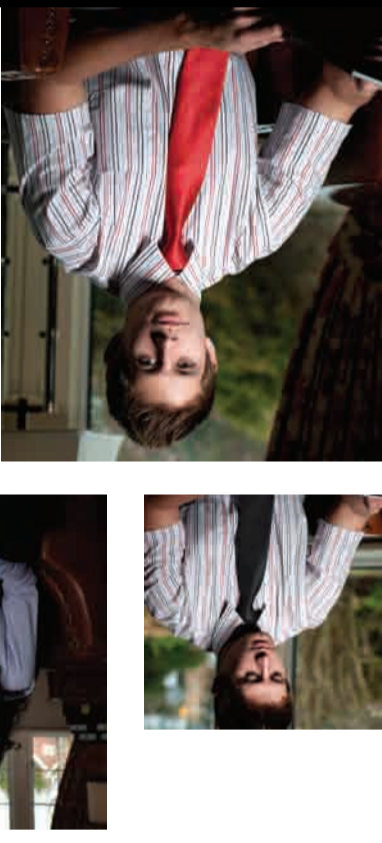
Available in sizes
 8 - 10 20 - 22
 12 - 14 24 - 26
 16 - 18

96% Viscose
 4% Lycra

Easy Care Stretch

Color options:
 White (HHS102A)
 Liac (HHS102C)
 Blue (HHS102D)
 Black (HHS102B)
 Rich Red (HHS102E)
 Teal (HHS102F)

The Ladies Comfort Collection



Classic Coloured Woven Men's Tie a stylish men's classic shadow stripe tie available in a range of colours design specifically to co-ordinate with the ladies collection of scarves and tops. It is fully machine washable.

Available in sizes
 14.5 to 20

65% Cotton
 30% Polyester
 5% Spandex

Easy Care Stretch

Color options:
 Charcoal (HHMT0B)
 Black (HHMT0B)
 Liac (HHMT0C)
 Blue (HHMT0D)
 Rich Red (HHMT0E)

Color options for shirts:
 Blue & Liac (HHMS03A) Mens short sleeve shirt
 Pink & Red (HHML03B) Mens short sleeve shirt
 Pink & Red (HHML03B) Mens long sleeve shirt
 Blue & Liac (HHMS03A) Mens long sleeve shirt

The Men's Coloured Woven Collection



Classic Stripe Long Sleeve Ladies stylish shirt collar style, semi fitted long sleeve, cotton-rich blouse with stretch for added comfort. Sleeves feature a deep cut shaped cuff with button detail. It is cool and comfortable to wear due to the breathability of the fabric, also available in short sleeve.

Available in sizes 8 to 26

65% Cotton
 30% Polyester
 5% Spandex

Easy Care Stretch

Color options:
 Blue & Liac (HHS02A)
 Pink & Red (HHS02B)

The Ladies Coloured Woven Collection

